

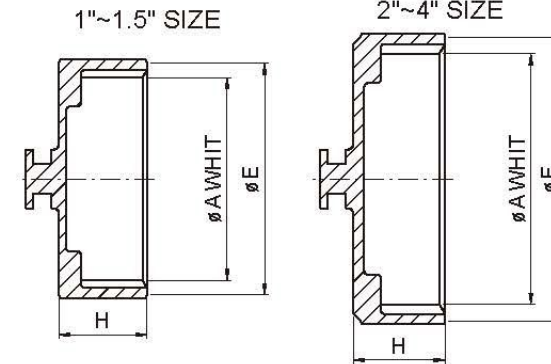


# RJT UNION (BS4825 PART 5)



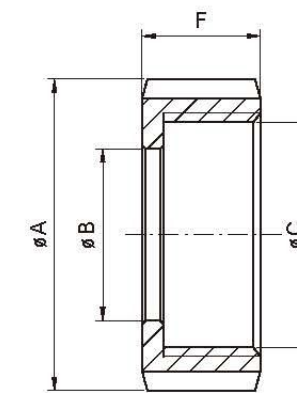
- Standards: BS 4825 Part 5.
- Applications: For the Food, Beverage, and other Hygiene Industry
- Working Pressures: 10 Bar (Max. operating)
- Materials: Round slotted Nut-----TP-304  
Hex. Nut-----TP-304  
Expanding Liner-----TP-304, 316, 316L  
Expanding Male part-----TP-304, 316, 316L  
Welding Liner-----TP-304, 316, 316L  
Welding Male part-----TP-304, 316, 316L  
Blank Round Nut-----TP-304, 316, 316L  
Blank Hex. Nut-----TP-304, 316, 316L  
Blank Liner-----TP-304, 316, 316L  
Seal----EPDM, Silicone, Buna-N, Viton.
- Surface Finished: Ra Max 0.8um.
- Size range: 1"-----8"

## RJT UNION



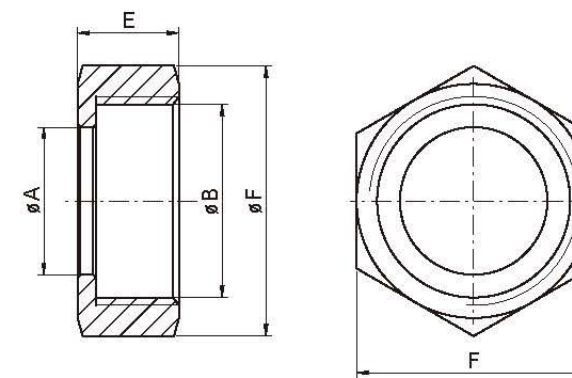
**RJT-13AH 六角盲螺帽**  
RJT BLANK HEXAGONAL NUT

SIZE	A	E	H
1"	42.6*1/8	49.0	24.0
1 1/2"	55.3*1/8	63.0	24.0
2"	68.3*1/6	77.3	25.0
2 1/2"	80.9*1/6	90.0	26.0
3"	93.6*1/6	102.7	26.0
4"	119.1*1/6	128.0	25.0
6"	169.6*1/6	182.0	29.0



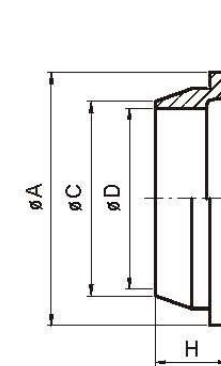
**RJT-13R 圓螺帽**  
RJT ROUND NUT

SIZE	A	B	C	F
1"	58.5	33.3	42.6*1/8	22.2
1 1/2"	74	46	55.3*1/8	22.2
2"	85.5	58.7	68.3*1/6	22.2
2 1/2"	98.5	71.4	80.9*1/6	22.2
3"	111.6	84.1	93.6*1/6	22.2
4"	138	109.5	119.1*1/6	22.2
5"	172.5	136	144.1*1/6	24
6"	197	162.6	169.6*1/6	23.5



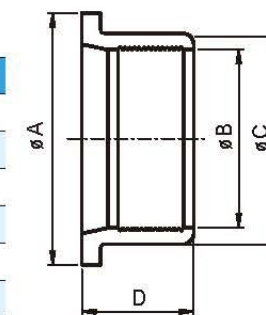
**RJT-13H 六角螺帽**  
RJT HEX. NUT

SIZE	A	B	E	F
1"	33.3	42.6*8T	22.2	50.8
1 1/2"	46	55.3*8T	22.2	65
2"	58.7	68.3*6T	22.2	79.3
2 1/2"	71.4	80.9*6T	22.2	92
3"	84.1	93.6*6T	22.2	104.7
4"	109.5	119.1*6T	22.2	130
6"	163.3	169.6*6T	23.8	184



**RJT-14 無牙接頭**  
RJT WELD LINER

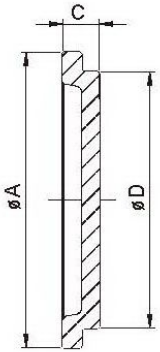
SIZE	A	C	D	H
1"	41.3	25.65	22.2	19.5
1 1/2"	54.0	38.35	34.9	19.5
2"	66.7	51.05	47.6	19.5
2 1/2"	79.4	63.75	60.3	19.5
3"	92.1	76.45	73.0	19.5
4"	117.5	101.85	97.6	19.5
6"	169.1	152.5	148	23.5



**RJT-14R 擴管平接頭**  
RJT EXPANDING LINER

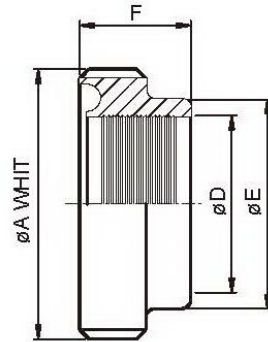
SIZE	A	B	C	D
1"	41.3	25.5	32.5	20
1 1/2"	54	38.2	45.2	24
2"	66.7	50.9	57.9	28
2 1/2"	79.4	63.6	70.6	32
3"	92.1	76.3	83.3	32
4"	117.5	101.7	108.7	32





**RJT-14AH** 盲板接頭  
RJT BLANK CAP

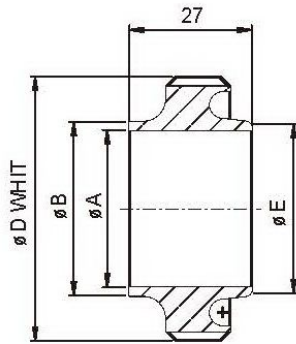
SIZE	A	D	C
1"	41.3	32.4	8.2
1 1/2"	54	45.1	8.2
2"	66.7	57.8	8.2
2 1/2"	79.4	70.5	8.2
3"	92.1	83.1	8.2
4"	117.5	108.6	8.2
6"	169	159.6	10.2



**RJT-15R** 擴管牙接頭  
RJT EXPANDING MALE

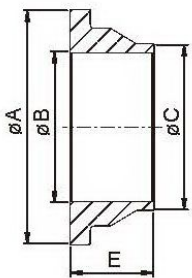
SIZE	A	D	E	F
1"	45.7*8T	25.5	32.5	20
1 1/2"	58.4*8T	38.2	45.2	24
2"	72.7*6T	50.9	57.9	28
2 1/2"	85.4*6T	63.6	70.6	32
3"	98.1*6T	76.3	83.3	32
4"	123.8*6T	101.7	108.7	32

**RJT-15** 有牙接頭  
RJT WELD MALE



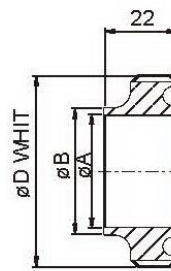
SIZE	A	B	D	E
1"	22.2	25.65	45.72*8T	25.4
1 1/2"	34.9	38.35	58.42*8T	38.1
2"	47.6	51.05	72.72*6T	50.8
2 1/2"	60.3	63.75	85.42*6T	63.5
3"	73.0	76.45	98.12*6T	76.2
4"	97.6	101.85	123.52*6T	101.6
8"	198.8	203.2	224.3*6T	203.3
104	100	104	123.52*6T	101.6

**14CIP** CIP無牙接頭  
FLAT FACE LINER



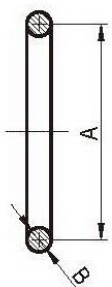
SIZE	A	B	C	E
1"	41.3	22.2	25.4	19.0
1 1/2"	54.0	34.9	38.1	19.0
2"	66.7	47.6	50.8	19.0
2 1/2"	79.4	60.3	63.5	19.0
3"	92.1	73.0	76.2	19.0
4"	117.5	97.6	101.6	19.0
6"	168.3	148.2	152.4	23.5

**15CIP** CIP有牙接頭  
FLAT FACE MALE



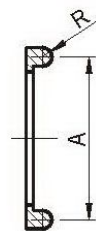
SIZE	A	B	D
1"	22.2	25.4	45.72*8T
1 1/2"	34.9	38.1	58.42*8T
2"	47.6	50.8	72.72*6T
2 1/2"	60.3	63.5	85.42*6T
3"	73.0	76.2	98.12*6T
4"	97.6	101.6	123.52*6T
6"	148.2	152.4	174.32*6T

**RJT** 墊片  
RJT SEAL O-RING

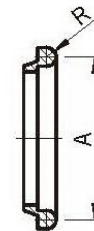


SIZE	A	B
1"	33.3	6.6
1 1/2"	54.0	6.6
2"	66.7	6.6
2 1/2"	79.4	6.6
3"	92.1	6.6
4"	117.5	6.6
6"	168.3	6.6

CIP墊片  
CIP SEAL



RJT SEAL U-TYPE



SIZE	A	B
1"	33.3	3.2
1 1/2"	54.0	3.2
2"	66.7	3.2
2 1/2"	79.4	3.2
3"	92.1	3.2
4"	117.5	3.2
6"	168.3	3.2